

The background of the middle section is a photograph of a person's hands holding a white smartphone. Overlaid on the image are various digital graphics, including a bar chart, a line graph, and several icons representing different digital concepts. A green geometric pattern is visible on the left side of the image.

DESIGN YOUR PERSONAL LEARNING PLAN

AN INTERACTIVE
STUDENT GUIDE



2018 2019

WELCOME LETTER

Dear PSI High Students and Families,

On behalf of the entire staff, I am excited to welcome you to the PSI High family! Students like you form the foundation of our Problem Solving Incubator and drive the life-enriching experiences that happen on campus every day. Moreover, as part of the inaugural class of students, you get the opportunity to design the culture and ideas that will shape PSI High forever.



This year, you will pursue projects that match your passions while making a difference at school and in the community. You'll form tight relationships with friends, teachers, and business partners. You will grow as a creative problem solver and graduate with an incredible portfolio of work and contacts.

You may be wondering what you can do to make the most of your experience at PSI High. My advice is simple but not easy: change your mindset. Often, when people are met with difficult challenges or failure, they believe it's because they aren't good enough. They give up. That's what Carol Dweck calls having a "fixed" mindset. But at PSI High, we view failure as a learning opportunity. We don't average together your failures and successes. We're going to help you keep trying and learning until you reach your goals. You just need to enjoy the journey, not be too hard on yourself, and realize that every setback is an opportunity for improvement. That's a "growth" mindset.

In the coming weeks, I hope to schedule a meeting with you to design your personal learning plan. This document is the first step of that process. Please work through this guide over the next week, fill it with your ideas and questions, and bring it to your welcome meeting. If you have any questions before your meeting, please reach out to me directly.

Again, welcome to the PSI High family. I'm happy you're here.

Warmly,

Derek Jensen

Derek Jensen, PSI High Program Manager
(407) 320-0330
Derek_Jensen@scps.us

TABLE OF CONTENTS

04 YOUR PURPOSE

06 GETTING STARTED

07 CORE PROJECT THEMES

08 9TH GRADE
LEARNING PLAN

10 10TH GRADE
LEARNING PLAN

12 11TH GRADE
LEARNING PLAN

14 12TH GRADE
LEARNING PLAN

16 AREAS OF FOCUS

18 CREATE YOUR OWN
LEARNING PLAN

19 YOUR PROJECTS

20 YOUR DAILY SCHEDULE

22 MANAGING YOUR TIME



YOUR PURPOSE

“The two most important days in life are the day you are born and the day you discover your reason why.”

Dan Pink, author of *Drive*, says that autonomy is the urge to direct our own lives, mastery is the desire to get better and better at something that matters, and purpose is the yearning to do what we do for something larger than ourselves. Simply put, your purpose is your reason why. Your purpose is what drives your decision-making and leads to true happiness.

We want you to follow your passions and discover your purpose. As a PSI High learner, you'll have opportunities to explore projects in many different fields and focus on the things you love.

This is a first step in considering your purpose. Please spend a few days thinking about it, write down your ideas, and bring this guide to your welcome conference. It will help start the dialogue about what projects will bring you joy, empowerment and success.

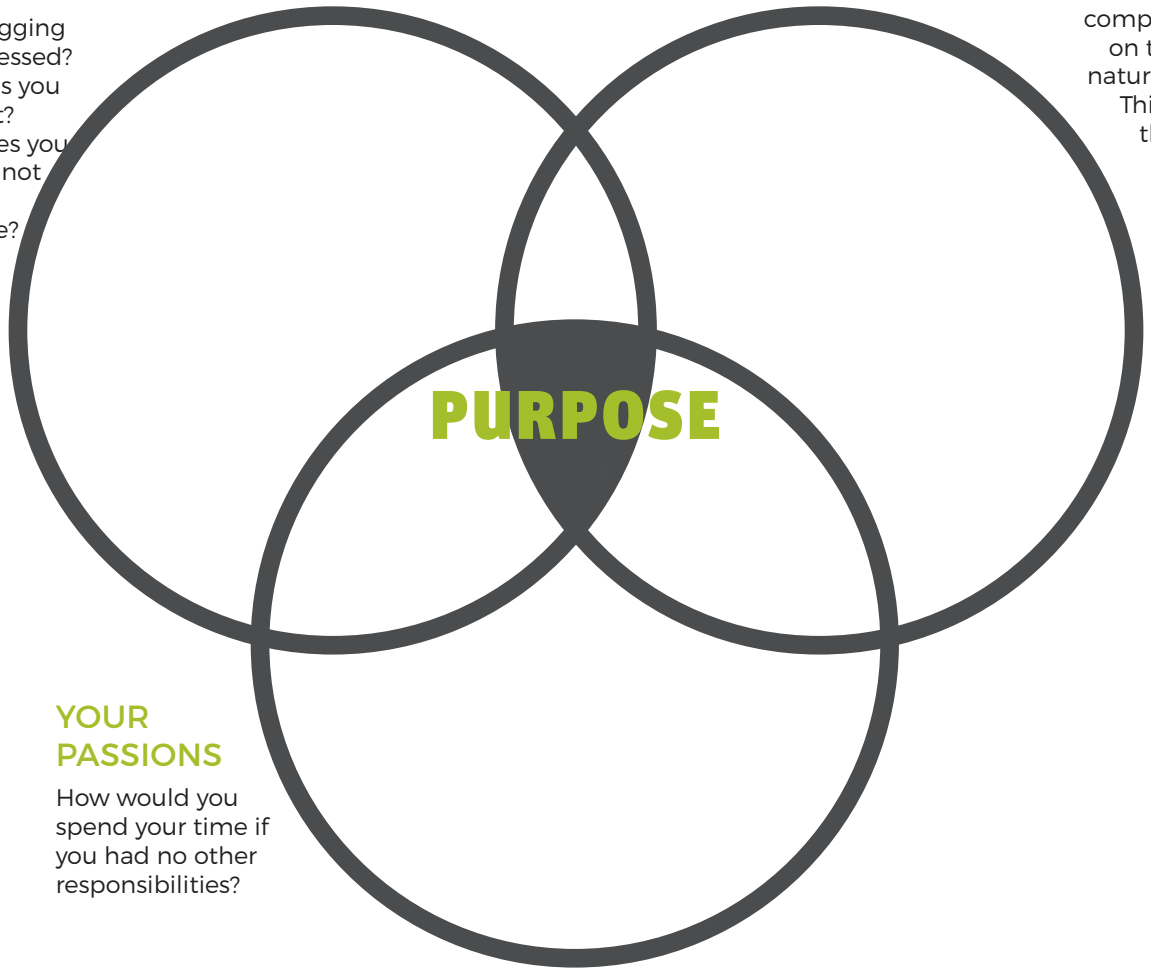
On the next page, try your best to list as many things as you can in each area. Each circle represents a key element to developing your purpose. Revisit this over multiple days to let yourself brainstorm. Use extra paper when you're overflowing with ideas.

YOUR VIEW OF THE WORLD

What is begging to be addressed?
What keeps you up at night?
What makes you angry that not more is being done?

YOUR SKILLS

What do people compliment you on that comes naturally to you?
Think beyond the resume.



YOUR PASSIONS

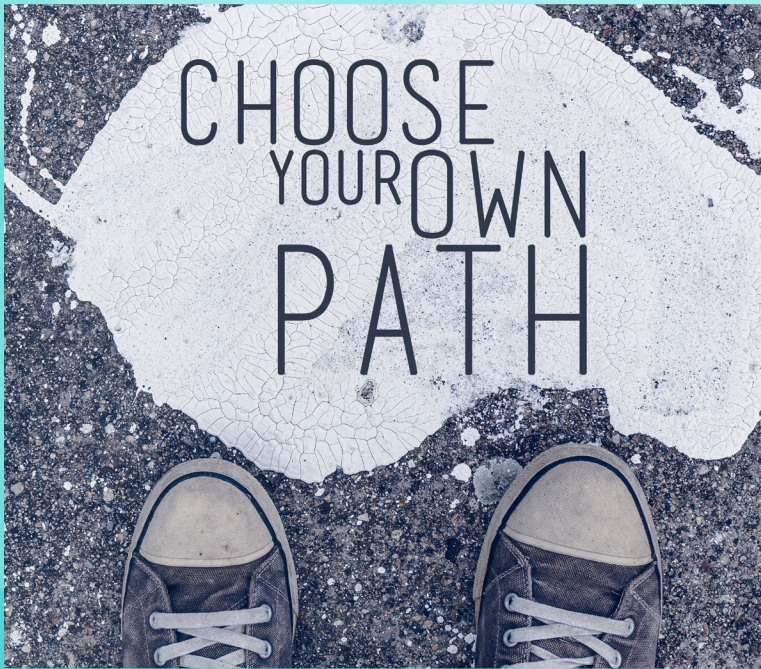
How would you spend your time if you had no other responsibilities?

GETTING STARTED

Most learners think about their schedule in terms of where they're going to be each class period. As a PSI High student, you need to think about your schedule as a collection of themes and topics you want to study.

You still select individual courses like any other student, but as you consider building your learning plan, you need to think about the questions listed below.

Don't worry if these questions seem daunting. In the next few pages, we will provide a starting point for your learning plan as well as suggestions and ideas to guide you. Soon, you'll encounter a blank course template to complete. Fill it out and bring it to your welcome conference to help guide the meeting.



01

WHICH COURSES DO I WANT TO TAKE IN A CLASSROOM? WHICH WOULD BE A GOOD FIT FOR PROJECT-BASED LEARNING?

02

HOW DO MY COURSES FIT WITH MY PASSIONS AND PURPOSE?

03

IS THERE ANYTHING LIKE BAND OR DRAMA THAT I WANT TO TAKE OUTSIDE OF PSI HIGH? WHAT CAN I GO WITHOUT TO FIT THAT INTO MY DAY?

CORE PROJECT THEMES

As you look at recommended courses on the following pages and begin to choose your own, you'll see that we've grouped topics that seem to fit together. For example, as a 12th grader, we recommend world history, engaged citizenship, leadership, and Arts Collaboration: Designing Solutions for Art, Work, and Life.

We think it's a good idea to learn thematically, and it's particularly awesome for project-based learning. The following are the themes for each year:

 <p>DESIGN & ENGINEERING</p> <p>Engage in the design thinking process to create solutions for yourself and the world around you.</p>	 <p>GLOBAL BUSINESS</p> <p>Explore political and economic ideas, then harness your own passion to start a business or social endeavor.</p>	 <p>PRODUCT LAUNCHPAD</p> <p>Launch a real entrepreneurial venture that brings something new and impactful into the world.</p>	 <p>ENGAGED CITIZENSHIP</p> <p>Act on the issues that are important to you through social entrepreneurship or community service.</p>
--	--	--	--

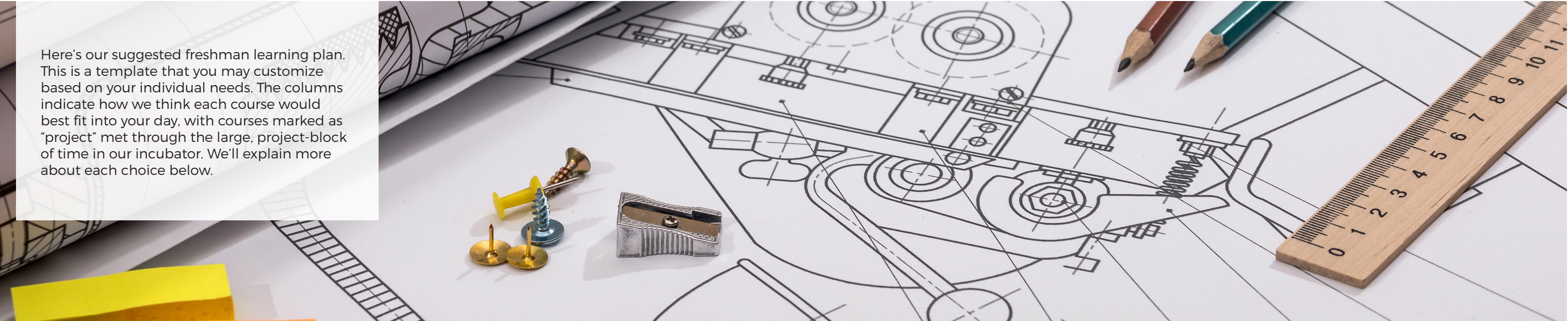
We support the theme for each year with skill sessions and projects that align to all of your different courses. Don't worry though, your theme isn't the only type of project you'll be doing. You'll have a lot of choice in what you pursue.

Some of your projects will be designed by your teachers. Some of your projects will be designed by community partners. You will design some yourself. But most importantly, we want you to always work on at least one project that you love.

LEARNING PLAN

9TH GRADE

Here's our suggested freshman learning plan. This is a template that you may customize based on your individual needs. The columns indicate how we think each course would best fit into your day, with courses marked as "project" met through the large, project-block of time in our incubator. We'll explain more about each choice below.



Class Name	Course #	Type
English 1 Honors	1001320	Class
Geometry Honors	1206320	Class
Physics Honors	2003390	Project
Digital Information Technology	8207310	Project
Leadership Skills	2400300	Project
Research 1	1700300	Project
Physical Education/Personal Fitness/Fitness Lifestyle	SCVS	Virtual

ENGLISH 1 HONORS

A state requirement with a FSA exam at the end of the year. For those reasons (and to build research and writing skills), we recommend you take this in a classroom.

GEOMETRY HONORS

A state requirement. Both geometry and algebra have exams at the end of the year. If you haven't passed Algebra 1 (1200320) yet, add it to your learning plan instead of geometry.

PHYSICS HONORS

We think physics is the perfect class for freshmen, and we think you'll love learning it through hands-on, real-world projects. Don't worry about biology... you'll get to it. If you haven't passed Algebra 1 yet, Physical Science Honors (2003320) may be a great fit for you instead.

DIGITAL INFORMATION TECHNOLOGY

This course focuses on software productivity, culminating in an industry certification for Microsoft Office. You'll need these skills every single day, and it's also the first course in our embedded Business Management and Administration program.

LEADERSHIP SKILLS

Through your projects, you will cultivate skills in areas like collaboration, leadership, creativity, and community involvement. That's why we embedded the leadership sequence into our sample learning plan. If you're interested in other elective opportunities (see the Areas of Focus page), this may be the perfect sequence to replace.

RESEARCH 1

To be a creative problem solver, you need to be a lifelong learner and researcher. We embed many important research skills into your first year at PSI High.

P.E./PERSONAL FITNESS/FITNESS LIFESTYLE

The state requires you to take a half credit of both gym and fitness, as well as at least one virtual course. This meets both requirements and allows for more flexibility during 9th grade.

LEARNING PLAN

10TH GRADE

Here's our suggested sophomore learning plan. By the end of the year, you will have the opportunity to launch your own business, brand, or organization.

Class Name	Course #	Type
English 2 Honors	1001350	Class
Algebra 2 Honors	1200340	Class
Environmental Science Honors	2001341	Project
Business and Entrepreneurship Honors	8215120	Project
Leadership Techniques	2400310	Project
Government and Economics Honors	2106320/2102345	Project
Spanish 1	SCVS	Virtual

ENGLISH 2 HONORS
Just like English 1, this is a state requirement with a FSA exam at the end of the year. We recommend you take this in a classroom. (Your projects will reinforce these skills too!)

ALGEBRA 2 HONORS
If you haven't enrolled in Geometry yet, add it to your learning plan instead of Algebra 2. Because of the required skills in this course, we recommend taking it as a class.

ENVIRONMENTAL SCIENCE HONORS
The skills from this course pair extremely well with the global, environmental focus of PSI High. However, suitable replacements include earth and space science or marine science.

BUSINESS AND ENTREPRENEURIAL PRINCIPLES HONORS
This course focuses on business organization, management, entrepreneurial principles, ethics, and leadership. It's the second course in the Business Management and Administration program. Even if you don't want to pursue a career in business or start your own company, the attitudes and skills from this course will prepare you for success at PSI High and in life.

LEADERSHIP SKILLS
This is the second course in the leadership sequence. If you're interested in other elective opportunities (see the Areas of Focus page), this may be the perfect sequence to replace.

GOVERNMENT HONORS AND ECONOMICS WITH FINANCIAL LITERACY HONORS
Students are required to take government and economics for graduation. These topics fit perfectly with this year's core project theme of global business and entrepreneurship.

SPANISH 1
Two consecutive years of foreign language are highly recommended for college admission (and personal growth). We will supplement virtual coursework with real-world, project opportunities to interact with Central Florida organizations that serve Spanish-speaking communities.

LEARNING PLAN

11TH GRADE



Here's our suggested junior learning plan. During this year, you will create a product or service to address a real world need, and then you'll bring it to reality. You will even have a budget.

Class Name	Course #	Type
Biology Honors	2000320	Class
AP U.S. History	2100330	Class
English 3 Honors	1001380	Project
Accounting Applications Honors	8203310	Project
Leadership Strategies	2400320	Project
Probability and Statistics Honors	1210300	Project
Spanish 2	SCVS	Virtual

BIOLOGY HONORS

This is a state requirement with an EOC exam at the end of the year. We recommend you take this as a class, but what you do in biology will align with your new and previous projects.

ADVANCED PLACEMENT U.S. HISTORY

You are required to complete a United States History course with an EOC exam at the end of the year for graduation. AP students will also take the Advanced Placement exam, and students who pass the exam will receive college credit.

ENGLISH 3 HONORS

Starting in 11th grade, we recommend adding your language arts courses into your project block. You will build reading, writing, and language skills through your real-world problem solving projects. AP Language and Composition is also a popular face-to-face option.

ACCOUNTING APPLICATIONS 1 HONORS

You will learn to manage finances and budgets as the manager of your own project or startup. This is the third course in the Business Management and Administration program, through which, you may be eligible for Bright Futures Gold Seal and/or an industry certification.

LEADERSHIP STRATEGIES

This is the third course in the leadership sequence. If you're interested in other elective opportunities (see the Areas of Focus page), this may be the perfect sequence to replace.

PROBABILITY AND STATISTICS HONORS

Almost every project involves data collection and analysis. Through the learning goals in this course, you'll be able to make better decisions about everything through statistical methods.

SPANISH 2

Two consecutive years of foreign language are highly recommended for college admission (and personal growth). We will supplement virtual coursework with real-world, project opportunities to interact with local organizations that serve Spanish-speaking communities.

LEARNING PLAN

12TH GRADE

Here's our suggested senior learning plan. This year you'll engage deeply with an issue that matters to you and take your work to the next level. Also, you and your advisor will work closely on preparing for life after graduation—whether that's college or a career.



Class Name	Course #	Type
AP Statistics	1210320	Class
Chemistry Honors	2003350	Class
English 4 Honors	1001410	Project
Engaged Citizenship 1 and 2	2104350/2104360	Project
Approaches to Leadership	2400330	Project
Arts Collaboration Honors	0102340	Project
World History Honors	2109320	Project

AP STATISTICS

We will build on your statistics foundation from last year with a combination of classroom and project-based work. If you pass the AP exam at the end of the year, you'll also receive college credit! You are required to take four years of mathematics, but you can choose to replace this course with many other options if you prefer.

CHEMISTRY HONORS

Chemistry is a class that colleges like to see, but you have many other options (both honors and AP) based on your plans, interests, and projects.

ENGLISH 4 HONORS

You will continue to build reading, writing, and language skills through your real-world problem solving projects. AP Literature and Composition is also a popular face-to-face option.

ENGAGED CITIZENSHIP 1 AND 2

These courses are all about getting involved in service to the community for at least 30 total hours of time. However, through your various projects and citizenship initiative, you'll spend much more time than that meeting a community need.

APPROACHES TO LEADERSHIP

This is the final course in the leadership sequence. If you're interested in other elective opportunities (see the Areas of Focus page), this may be the perfect sequence to replace.

ARTS COLLABORATION: DESIGNING SOLUTIONS FOR ART, WORK, AND LIFE HONORS


This course asks students to use arts processes to explore and imagine new connections and solutions to real-world problems.

WORLD HISTORY HONORS

World history is a graduation requirement. During this year, you will engage in skill sessions and projects that tie history into everything else you're learning.

AREAS OF
FOCUS

You can choose to specialize in a particular area based on your passions and goals. By loading a sequence of electives into your learning plan, you're basically telling us: "This is what I care about! Please help me learn more about this!"



ROBOTICS

Your options include:
Foundation of Robotics (9410110)
Design Essentials (9410120)
Robotic Systems (9410130)
Robotic Capstone (9410140)

What we'll do:
Co-create amazing robotics projects; connect you with competitions and professional experiences



ANIMAL SCIENCES

Your options include:
Zoology (2000410)
Ecology (2000380)
Anatomy & Physiology (2000360)
Genetics (2000440)

What we'll do:
Coordinate projects and job/field experience to work authentically in animal sciences

“ FIND OUT WHO YOU ARE AND DO IT. ”

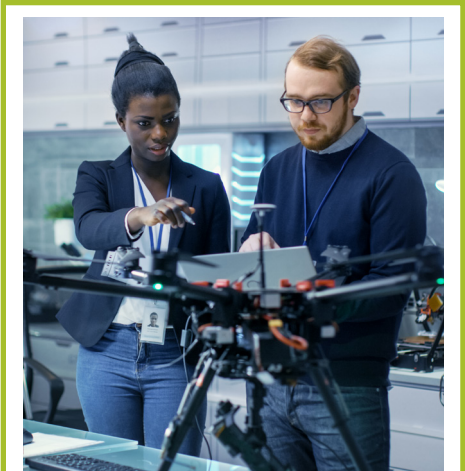
DOLLY PARTON



SCIENTIFIC RESEARCH

Your options include:
Experimental Science 1 (2002340)
Experimental Science 2 (2002350)
Experimental Science 3 (2002360)
Experimental Science 4 (2002370)

What we'll do:
Partner you with a teacher and research lab, provide guidance towards an ambitious research project



ENGINEERING

Your options include:
Intro to Engineering (8600550)
Principles of Engineering (8600520)
Digital Electronics (8600530)
Engineering Design (8600650)

What we'll do:
Design school-based projects; connect you with real-world engineering projects and partners



SOCIAL/CULTURAL ISSUES

Your options include:
African-American History (2100336)
Men & Women of Color (2100345)
Global Studies (2104320)
Women's Studies (2104340)
Community Service (2104330)

What we'll do:
Create a community of learners; connect you with organizations that work on issues you care about

For example, if you're really into digital marketing, you might want to integrate the digital design sequence into your course load. From there, we'll help ensure your PSI High experience is filled with projects and learning opportunities that integrate digital design.



WEB DEVELOPMENT

Your options include:
Digital Info Technology (8207310)
Foundation of Web Design (9001110)
User Interface Design (9001120)
Web Scripting (9001130)
Media Integration (9001140)

What we'll do:
Match you to web-based projects at school and in the community; help you grow as a developer



TEACHING & INSTRUCTIONAL DESIGN

Your options include:
Intro to Teaching (8909010)
Human Growth and Development (8909020)
Curriculum & Instruction (8909030)
Internship (8909040)

What we'll do:
Match you with projects and experiences that get you involved with teaching and learning at school and work



WRITING & LITERATURE

Your options include:
Creative Writing 1 (1009320)
Creating Writing 2 (1009330)
Creative Writing 3 (1009331)
Creative Writing 4 (1009332)

What we'll do:
Match you to literature circles, workshops, and creative real-world projects and publishing opportunities



DIGITAL DESIGN & MARKETING

Your options include:
Digital Info Technology (8207310)
Digital Design 1 (8209510)
Digital Design 2 (8209520)
Digital Design 3 (8209530)
Digital Design 4 (8209540)

What we'll do:
Help develop your design skills; pair you with local design and marketing projects; support your industry certification

“ THE ONLY SOURCE OF KNOWLEDGE IS EXPERIENCE. ”

ALBERT EINSTEIN

CREATE YOUR OWN LEARNING PLAN

- Create a draft of your learning plan in the table below. Some things to consider:
- If you are interested in taking courses through Seminole High School, please visit the Seminole High curriculum guide. (Link available on our website under “For Current Students”).
 - If you have a question, please contact us.

Grade: _____

Core Project Theme: _____

Class Name	Course #	Type

On the right track? Check here:



Have an English course?

4 credits required



Have a Math course?

4 credits required



Have a Science course?

4 credits required

10th Grade and Up



Have a Social Studies course?

3 credits required



Have project-based courses?

minimum 4 courses

YOUR PROJECTS

As a PSI High learner, your projects will have three things in common:

1. A challenging problem or question
2. An authentic audience
3. A high-quality deliverable

Throughout your time at PSI High, you'll work on projects in many different areas including engineering, community improvement, and business. Diverse experiences help you meet your graduation requirements and discover your skills and interests. Once school starts, you will quickly learn how to select projects, manage your time, and be successful in our incubator.



WHAT ARE YOU INTERESTED IN?

Take some time to think about the kind of projects you would love. (Look back to your passion diagram for inspiration.) You can research topics online or just daydream and let them pop into your head. Fill the space with as many project ideas as you can.

WHO WOULD YOU LIKE TO WORK WITH?

Think about people, companies, and nonprofit organizations that you would like to work with. List as many perfect project partners as you can in the space.

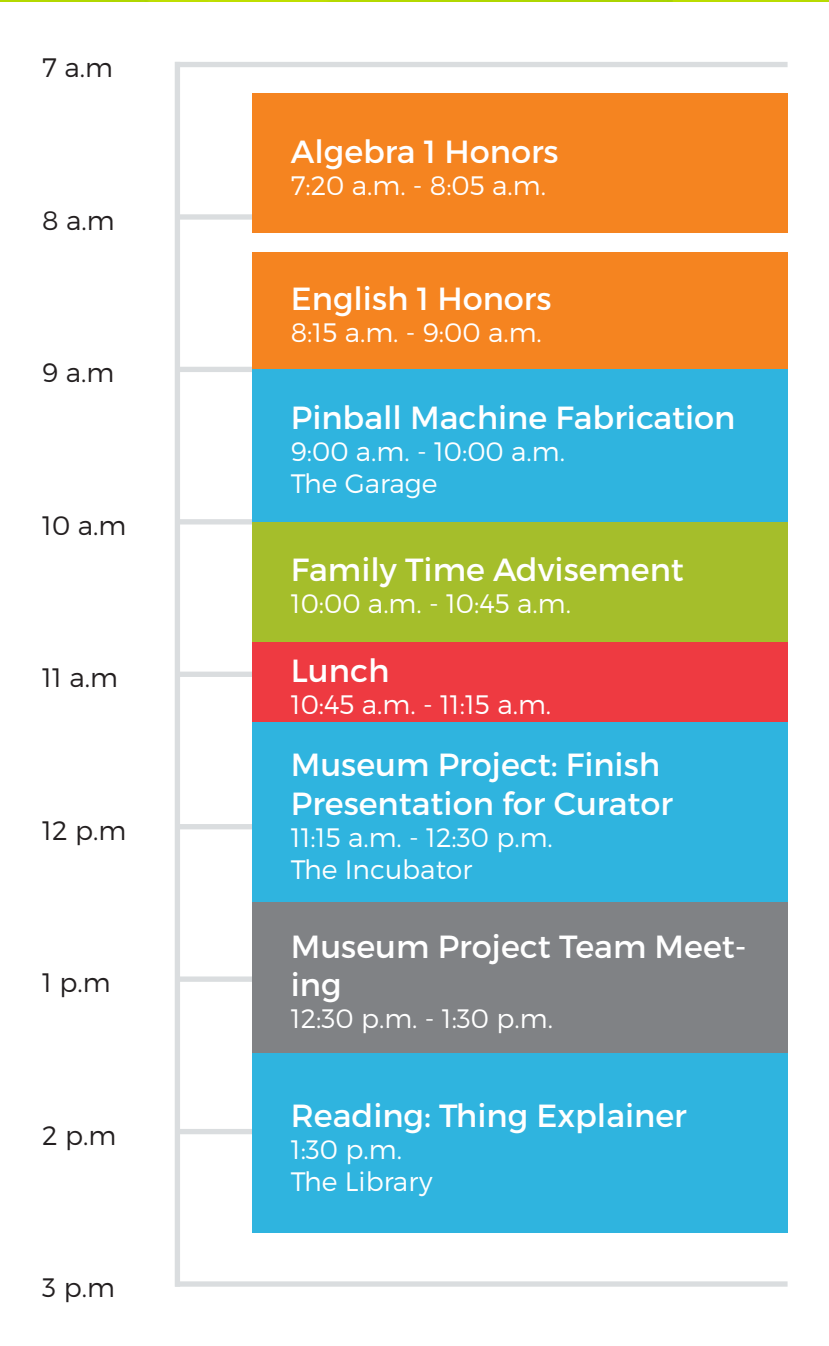
YOUR DAILY SCHEDULE

Your day at PSI High will look and feel very different from a normal school day. You might have a couple face-to-face classes. You'll meet with your advisor multiple times a week.

There will be regular skill sessions and meetings you attend. Most days, when you get to school, your schedule might look something like this:



Every day, you're going to be responsible for scheduling your time. If you are working on two big projects, you need to plan a time and place to work on them. If you need to talk to your project manager or teacher, you'll schedule a meeting. You even schedule your own lunch! Being a PSI High student is a lot like working in a high-tech office. Once you've planned your day, your schedule might look more like this:



MANAGING YOUR
TIME

In a Cengage Learning survey of college students, 59% said that procrastination is the biggest barrier to using their time wisely. In the same survey, 43% said that friends were a distraction, while 26% said they don't know how to create a good schedule for themselves.

Your teachers and advisors will help you learn to manage your time wisely. But for now, answer the questions in the following survey. The answers will help your teachers understand you better.

For each question, circle the number that best represents your feelings.

Question	Yes, Always							No, Never
Do you have trouble organizing the things you have to do?	1	2	3	4	5	6	7	
Do you tend to leave things until the last minute?	1	2	3	4	5	6	7	
Do you give up easily once you've started something?	1	2	3	4	5	6	7	
Do you find that during the day, you are often not sure what to do next?	1	2	3	4	5	6	7	
Do you think you do enough with your time?	1	2	3	4	5	6	7	

Question	Change Frequently				My Interests are the Same			
Do the important interests and activities in your life tend to change frequently?	1	2	3	4	5	6	7	

Question	No Purpose at All				A Great Deal of Purpose			
Do your main interests and activities fulfill some purpose in your life?	1	2	3	4	5	6	7	

(adapted from the Brandeis University Time Structure Questionnaire)

YOUR SUPPORT AT
PSI HIGH



The doors are open. The possibilities are endless. The opportunities are yours. We're excited! You're excited! Here are just some of the ways we'll help ease your transition into PSI High, as well as support you throughout high school:

1. A 4 week new student experience where you'll succeed on your first projects, visit our partners, and get to know your new school and community.
2. You'll be matched with a teacher who will serve as your personal advisor. You will meet together in small groups several times per week, and he or she will always be available to help you. Your advisor follows you from freshman year to graduation.
3. We offer daily skill sessions designed by teachers, community partners, and even students. You just sign up for the ones that you think are interesting and helpful. These small learning experiences address topics including academic help, business, personal skills, social and emotional well-being, and whatever else you need.

WHAT'S NEXT

Now it's time to sit down and create your learning plan for this year. If you haven't already done so, please contact us to schedule your welcome conference. We will meet together with a teacher, your family, and this guide to create your personal learning plan. Also, please reach out with any questions, concerns, or ideas you have.

To schedule your meeting, please call or e-mail Derek Jensen, PSI High Program Manager:

(407) 320-9050 OR **Derek_Jensen@scps.us**

www.psihigh.scps.k12.fl.us

